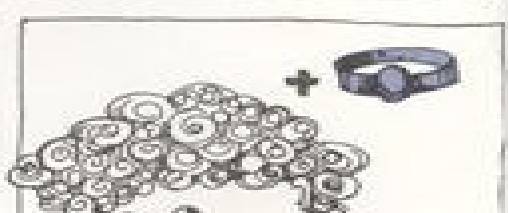
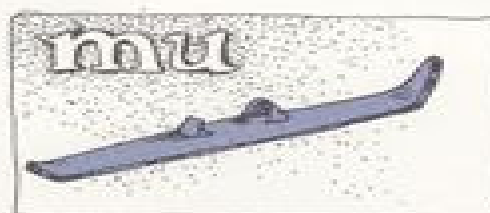
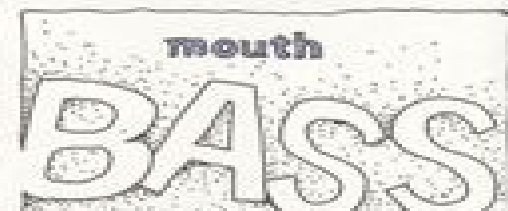


FISH QUIZ



Coalition of Haliburton Property Owners Associations WELCOME...!

David Flowers
Fisheries Extension Biologist,
Bancroft District

Sept 26, 2009

What's so special about my lake?

1. Fish Habitat

2. Fish Community

3. Stewardship



Fish Habitat...

The Fisheries Act defines fish habitat as “spawning grounds and nursery, rearing, food supply and migration routes on which fish depend directly or indirectly in order to carry out their life processes.”



“By protecting and enhancing the natural habitat within of our lakes, shorelines and watershed, we will have a direct impact on the sustainability and diversity of our native fish stocks”

Identification of Critical Fish Habitat and the Restoration / Rehabilitation of Degraded Sites.

- **Habitat surveys**
- **Shoreline rehabilitation**
- **Spawning bed creation...**

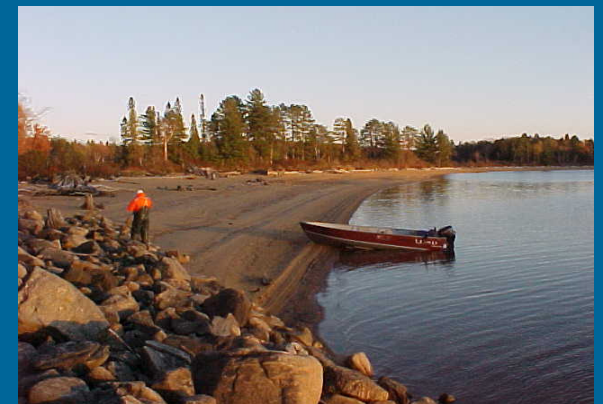




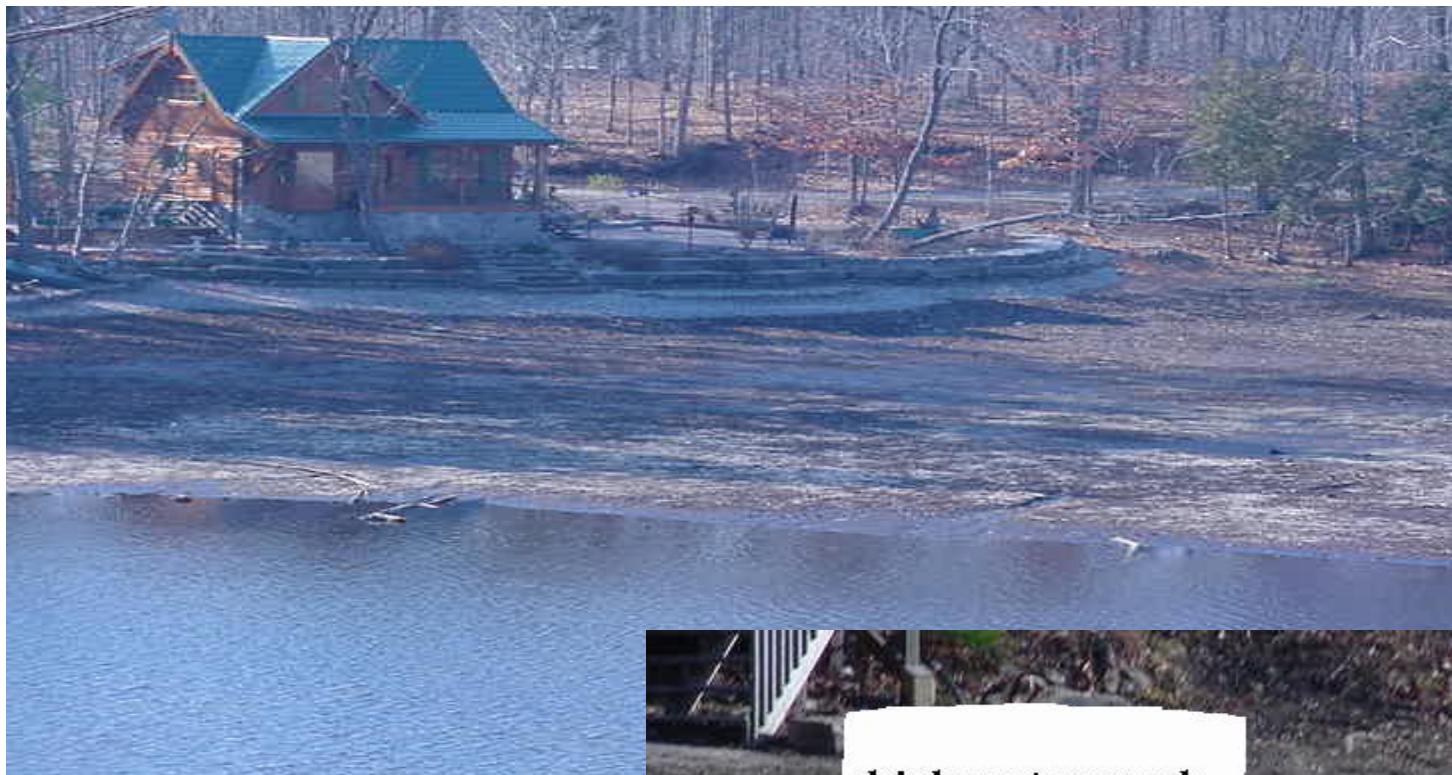
Technical Report on Lake Trout Spawning Activities on Percy Lake 2002: Spawning Counts, Substrate Inventory and Potential Rehabilitation Sites

Andrea Bauman
Ontario Ministry of Natural Resources

Jeremy Holden
Ontario Federation of Anglers and Hunters







high water mark

1999 low water mark

2001 current water mark

24 12:56PM



*TSW *standard operating procedures**

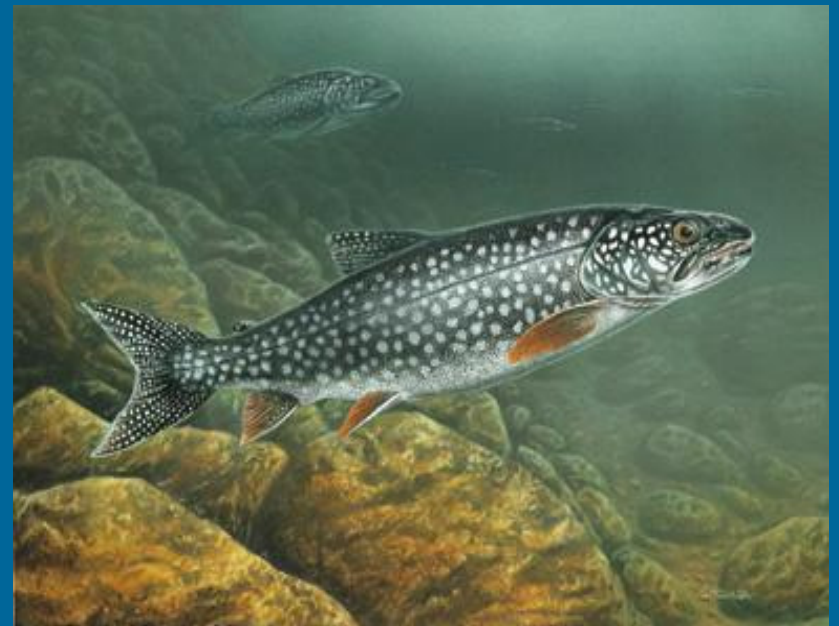
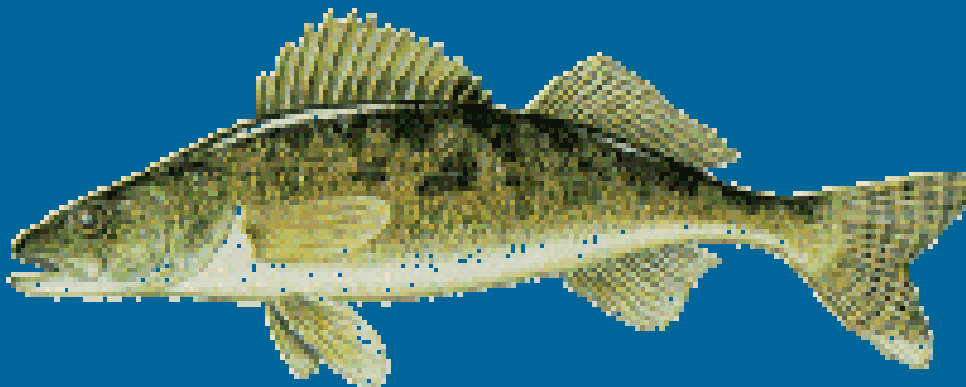
Upper Trent Tertiary Watershed - 2,948 Sq. Km.

**127 lakes > 50 ha in size
(74 lake trout lakes, 16 walleye)**

34 TSW Dams, 7 MNR

Fish Community...

“The state of our Fisheries is truly an indicator or measure of the health of our lake ecosystem”

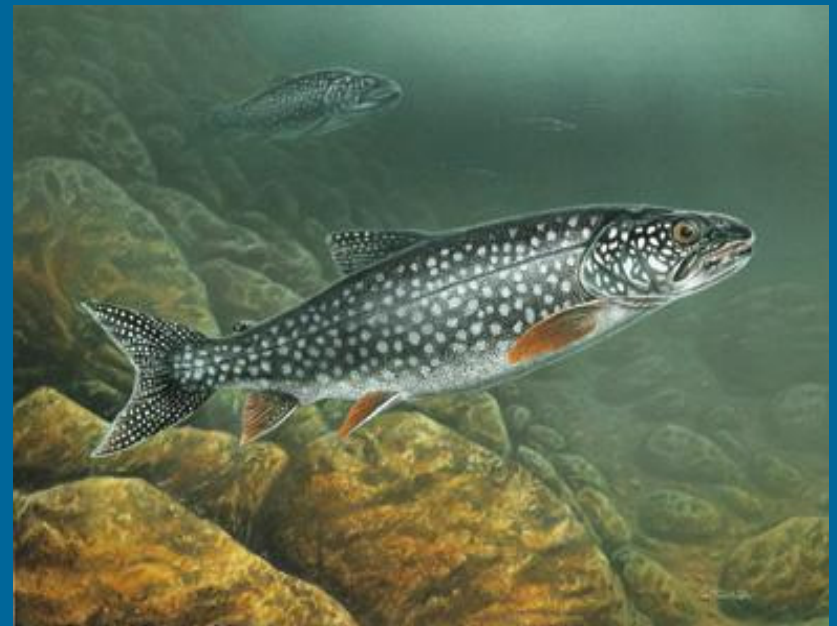
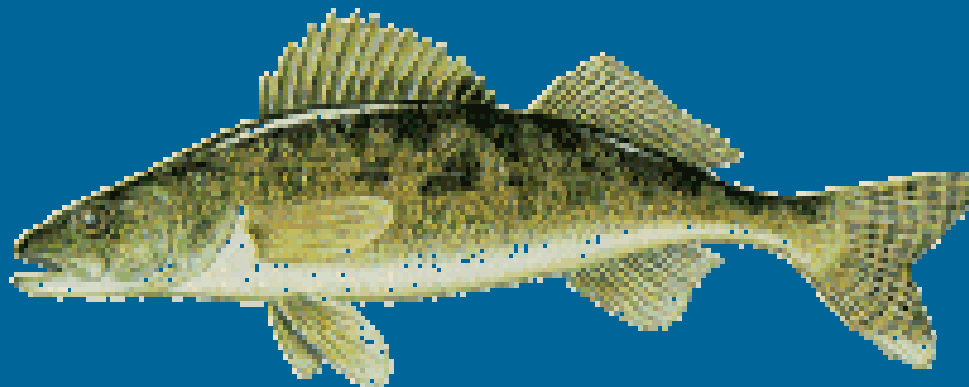


Fish Community...

“The state of our Fisheries is truly an indicator or measure of the health of our lake ecosystem”

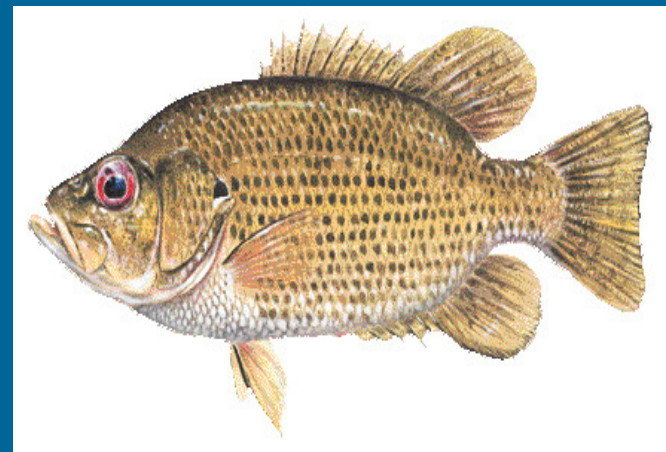
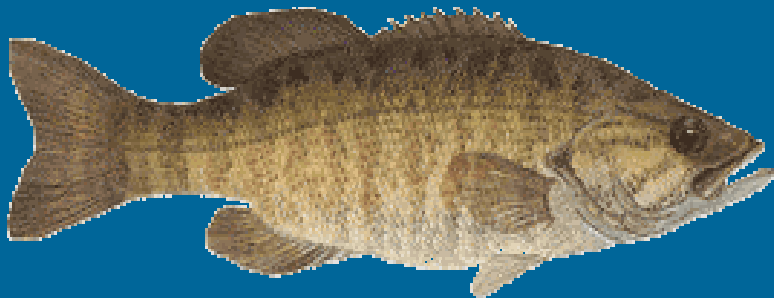
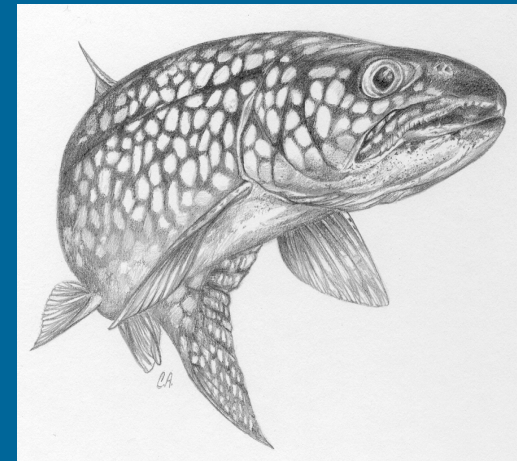
Fish Community Interactions

Fish Diversity and Species Abundance



Fish Community Interactions

Changes in the physical processes that structure the littoral zone habitats... may also alter the diversity of the fish community.

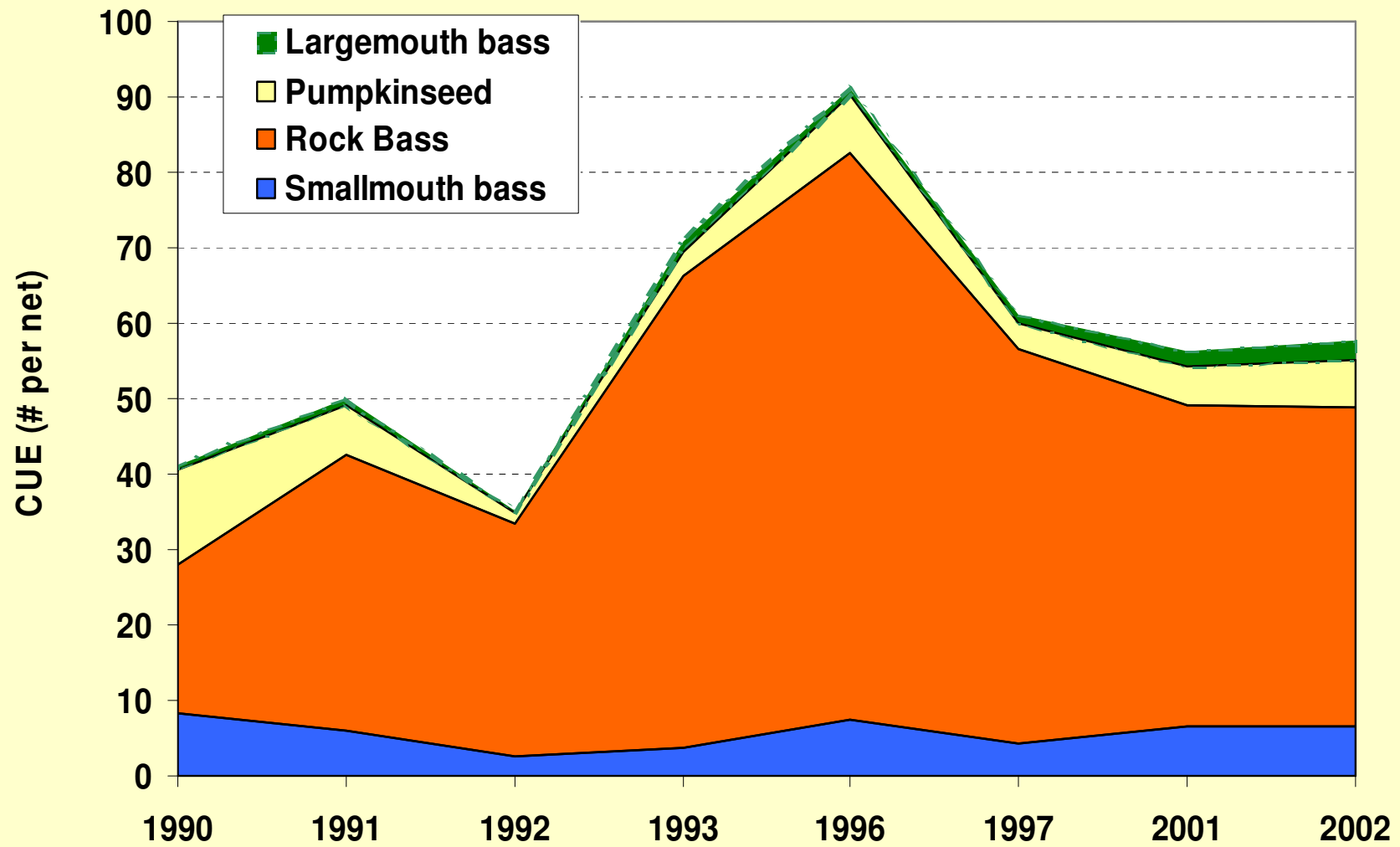


- Even slight modifications in dam operations can have a significant impact on lake fisheries and fisheries in connecting waters...

i.e. ...modifications to the timing of draw-down and the degree of maximum draw-down levels.

- Fish community effects should be discussed as a high priority much like flood control, navigation and waterpower generation.

Drag Lake NSCIN: centrarchid catches

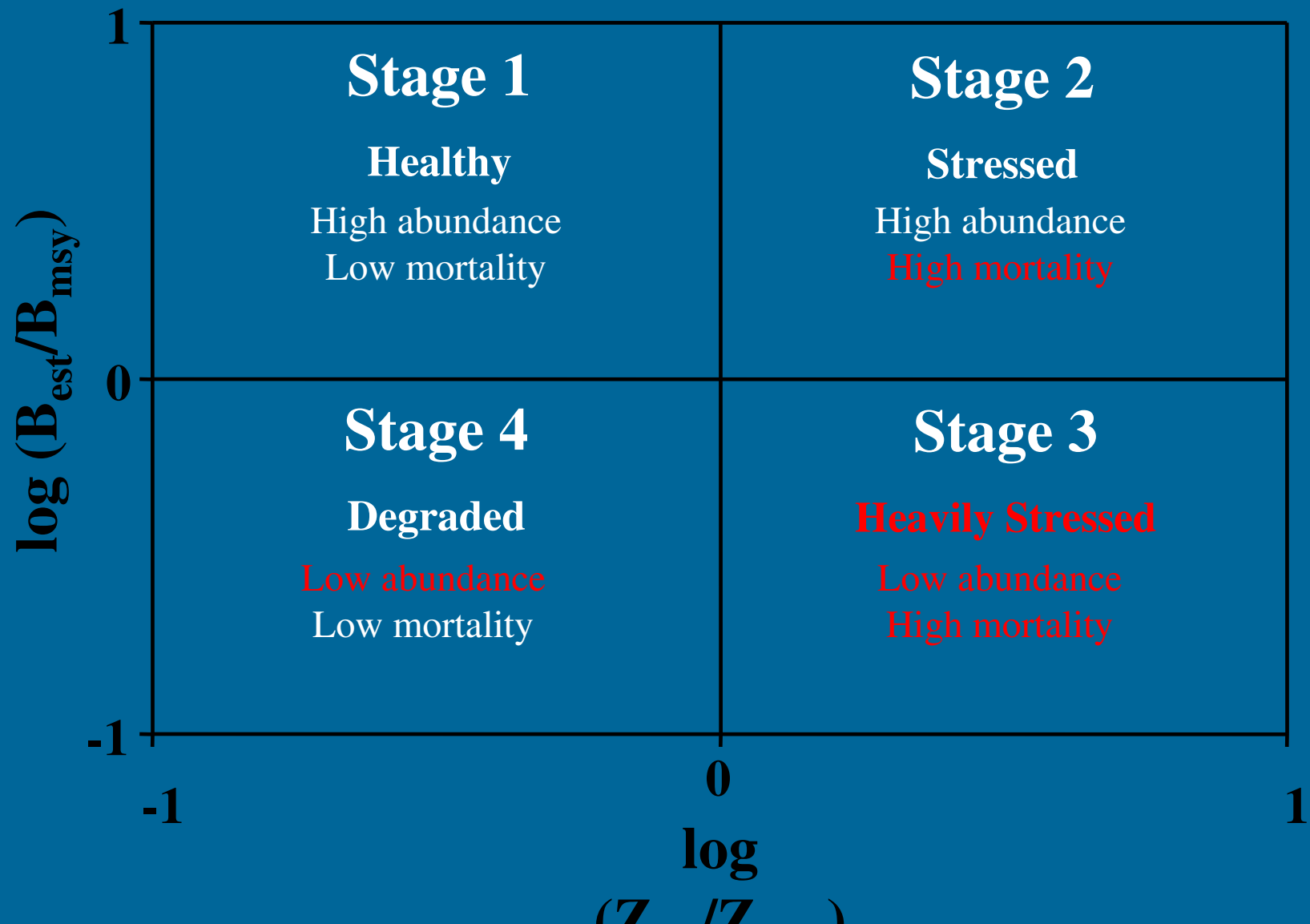


Fish Diversity and Species Abundance

- **Netting studies, creel surveys... (man's measure of influence - effort and harvest!)**
- **Dedicated angler programs!!**



Evaluating Resource Status



Stewardship...

*“Integrated planning and communication is
the key to effective management action”*



Stewardship...

“Integrated planning and communication is the key to effective management action”

Community Projects

Protection by Regulation

***.e....* Haliburton Lake Trout Project**

**Formed in 1997 in association with the HHOA,
MNR and OFAH.**

**Developed to evaluate the existing
Lake Trout program and to test
new approaches to manage the
fishery.**

A New Hatchery Facility...



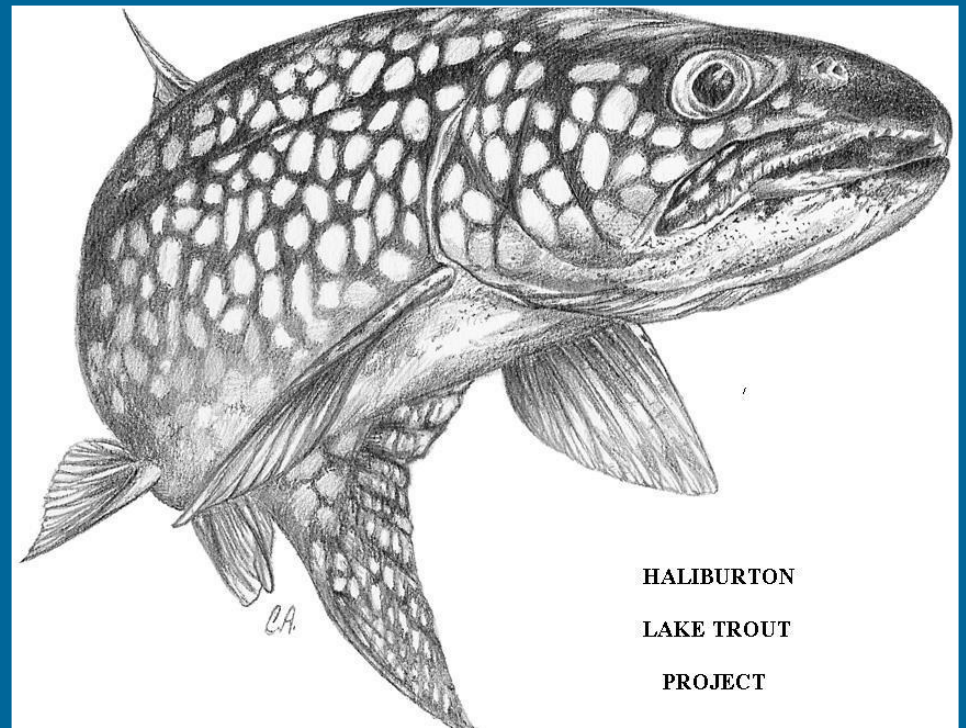
HALIBURTON LAKE TROUT PROJECT STRATEGY DOCUMENT 2005 - 2010

MISSION

“To manage lake trout fisheries in an ecologically sustainable manner to ensure they are available for the enjoyment and use of present and future generations.”

GOAL

To develop an experimental management program for lake trout lakes in Haliburton County which uses an adaptive management approach and focuses on improving angling opportunities and angler satisfaction; while ensuring sustainable harvest and protecting unique genetic stocks.



OBJECTIVES

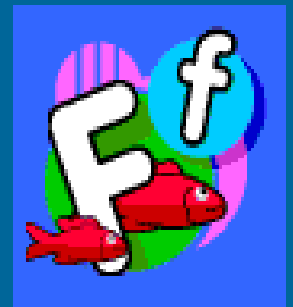
- 1. To document existing information, to identify information gaps, to set priorities for information collection and to identify how the information will be collected to assess, manage and monitor the lake trout fisheries in Haliburton County.**
- 2. To test the effectiveness of various regulations in managing the harvest of lake trout in Haliburton County.**

OBJECTIVES

- 3. To test the Haliburton strain of lake trout as a product for supplemental, rehabilitation and put-grow & take stocking in Haliburton County.**
- 4. To educate the public about the characteristics of lake trout fisheries, sustainable harvest levels, key stressors on lake trout fisheries, the various management tools and their effectiveness and how they can get involved.**

OBJECTIVES

- 5. To contribute to the understanding of lake trout management in Ontario.**
- 6. To provide socioeconomic benefits to communities in Haliburton County through the maintenance and enhancement of healthy lake trout populations.**



Managing our natural fish stocks for sustainability in light of growing fishing pressure, puts demands on us to regulate fisheries responsibly...

Public Notice: Percy Lake Silver Lake Trout



'Normal' Colour Pattern



Haliburton Silver Lake Trout

Percy Lake has been chosen to establish a second self-sustaining population of the unique silver lake trout. These fish are native only to Kingscote Lake in Algonquin Provincial Park. Percy Lake was chosen because of its geographic proximity and similarity to Kingscote Lake. These lake trout may be well adapted to reproduce in Percy Lake.

Lake trout were first introduced into Percy Lake in 1964, but wild recruitment from hatchery strains has been poor. Our objective is to establish a silver lake trout population in Percy Lake that will support a sustainable recreational fishery through natural recruitment.

Beginning in 2002, and for three consecutive years, fin-clipped yearling silver lake trout were stocked into Percy Lake. We intend to monitor their survival, recruitment and returns to the angling fishery over the next several years.

What can you do to help? The silver lake trout has only recently been introduced into Percy Lake and will require some degree of protection to become established. You can help this happen by releasing any silver lake trout that you catch, and keeping only lake trout with the 'normal' colour pattern. If you decide to keep the fish you catch, remember that the usual catch and possession limits for lake trout apply.



For more information, please contact the Haliburton Highlands Outdoors Association at (705) 457-9664 or the Minden MNR office at (705) 286-1521. The Haliburton Lake Trout Project (HLTP) is a partnership among the following organizations, in cooperation with the Percy Lake MNR station.



Protection by Regulation

- **Restricted access/development along shorelines where critical spawning areas are documented...municipal planning, issuance of work permits...**

- **Harvest and catch...**



Catch limits?

- **limit the harvest**
- **distribute the resource amongst users**
- **promote an ethical use of the resource**
- **convey realistic expectations regarding the capacity of the resource**

What's so special about my lake?



Protecting the Principle..! Fisheries Management Planning

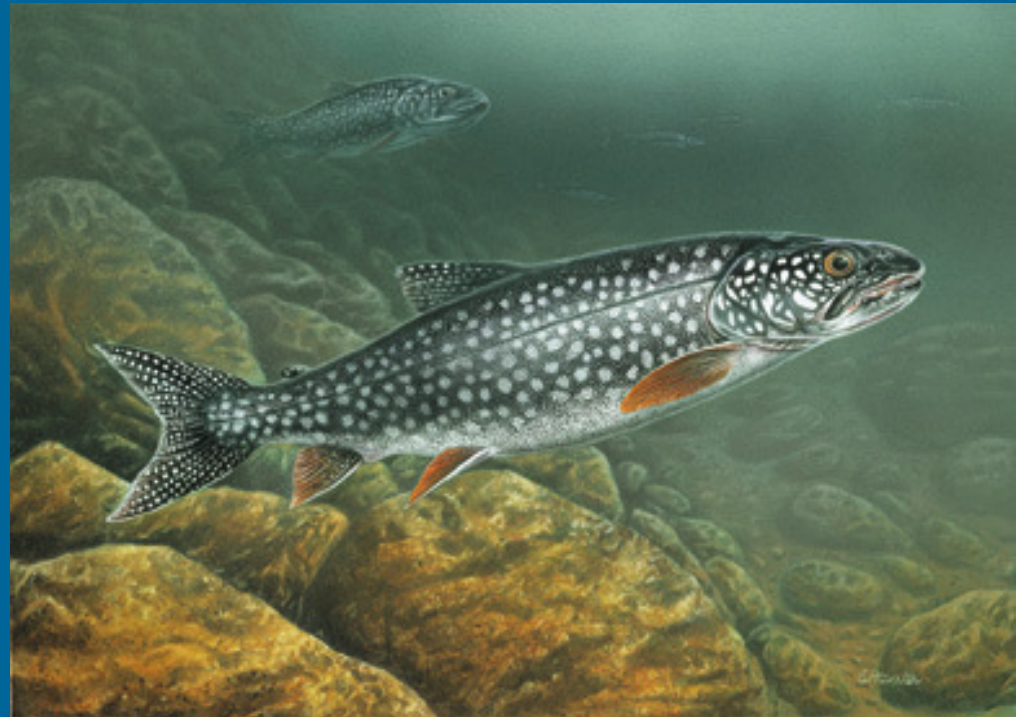
“By protecting and enhancing the natural habitat within our lakes, shorelines and watershed, we will have a direct impact on the sustainability and diversity of our native fish stocks”

“The state of our Fisheries is truly an indicator or measure of the health our lake ecosystem”

“Integrated planning and communication is the key to effective management action”



Questions?



David Flowers
Fisheries Extension Biologist, MNR
Minden Area Office, Bancroft District
(705) 286-5215
e-mail...david.flowers@ontario.ca

